

FANMFS - Series Silent Mixed Flow Inline Duct Fan

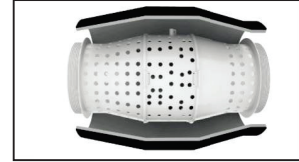
Details Show



Low-profile fan body with beautiful lines



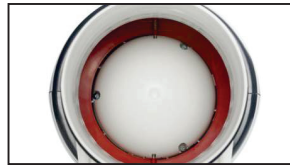
High performance hydromechanical fan blades



Ultra quiet design with two-layer sound absorbent and sound wave holes



Special design of joint to facilitate installation and dismounting;
Double diameter connection



Backdraft damper designed inside to prevent insects

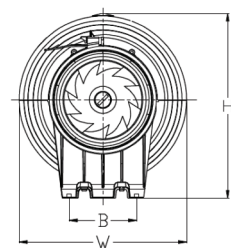
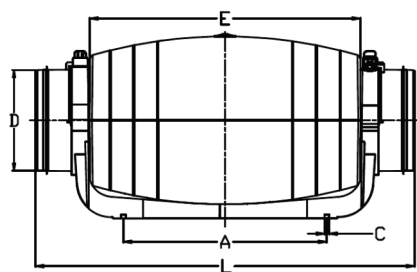


Easy installation and maintenance

Description

- Fan body is made of environmental protection material with beautiful lines and light weight, double insulation.
- Fan blade is designed according to hydromechanical principle to reach the optimal airflow and air pressure, high efficiency working, low energy consumption and low noise.
- Fan inside produced with two-layer sound absorbent and sound wave holes, to reduce noise level.
- Double diameter connection, sealing-up, leak-proof and shockproof.
- Backdraft damper designed inside, to prevent return air and insects.
- Special design of joint to facilitate installation and dismounting; easy installation and maintenance.
- Outer rotor motor inside, with Japanese brand NMB ball bearing, long working life over 50000 hours.
- Protection class: IP44
- Can be designed with user friendly features such as time delay, temperature sense, humidity sensor or other customized functions.
- Operating temperature range: -20°C ~60°C
- This series fans offers solution to ventilation problems, especially in places where people work and live and low sound level is required, such as meeting room, office, hotel, public place, residence, hospital, gym and etc.

Dimensions



Model	A	B	C	ØD	E	L	W	H
FANMFS-125	248	82	4-Ø5.5	97/123	330	580/462	205	225
FANMFS-150	251	95	4-Ø5.3	149/158	352	488	221	244
FANMFS-200	339	128	4-Ø5.6	198	436	567	262	301

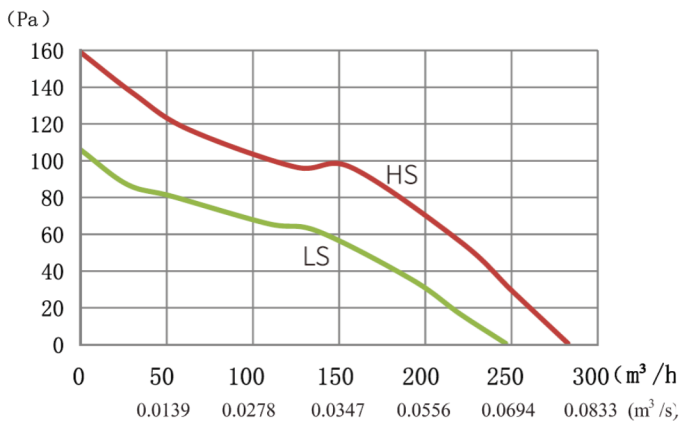
FANMFS - Series Silent Mixed Flow Inline Duct Fan

Performance Parameter

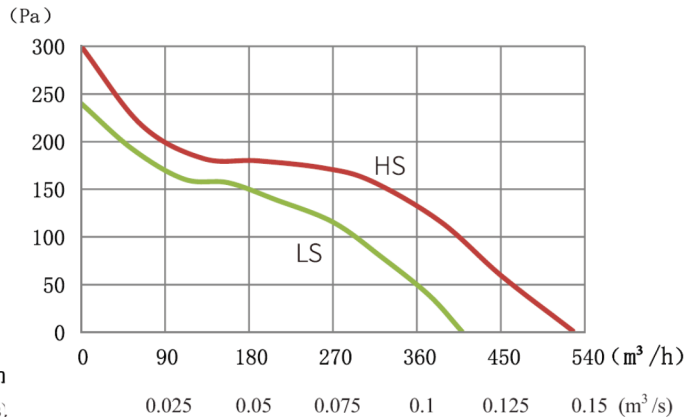
Model	Speed	Voltage /Frequency (V/Hz)	Current (Amps)	Power (W)	Speed (RPM)	Airflow		Air Pressure (Pa)	Noise (dB)	Net Weight (kgs)
						(m ³ /h)	(m ³ /s)			
FANMFS-125	H	220~240/50	0.14	33	2250	284	78.9	159	25	2.8
	L		0.13	28	1850	248	68.9	106	22	
	H	100~120/60	0.35	38	2250	284	78.9	159	25	
	L		0.31	32	1850	248	68.9	106	22	
FANMFS-150	H	220~240/50	0.25	50	2550	530	147.2	300	31	4.0
	L		0.20	43	1850	410	113.9	240	26	
	H	100~120/60	0.55	62	2550	530	147.2	300	31	
	L		0.45	49	1850	410	113.9	240	26	
FANMFS-200	H	220~240/50	0.57	128	2450	840	233.3	352	35	5.9
	L		0.52	123	1950	690	191.2	274	29	
	H	100~120/60	1.60	160	2450	840	233.3	352	35	
	L		1.30	135	1950	690	191.2	274	29	

Performance Curves

FANMFS-125



FANMFS-150



FANMFS-200

